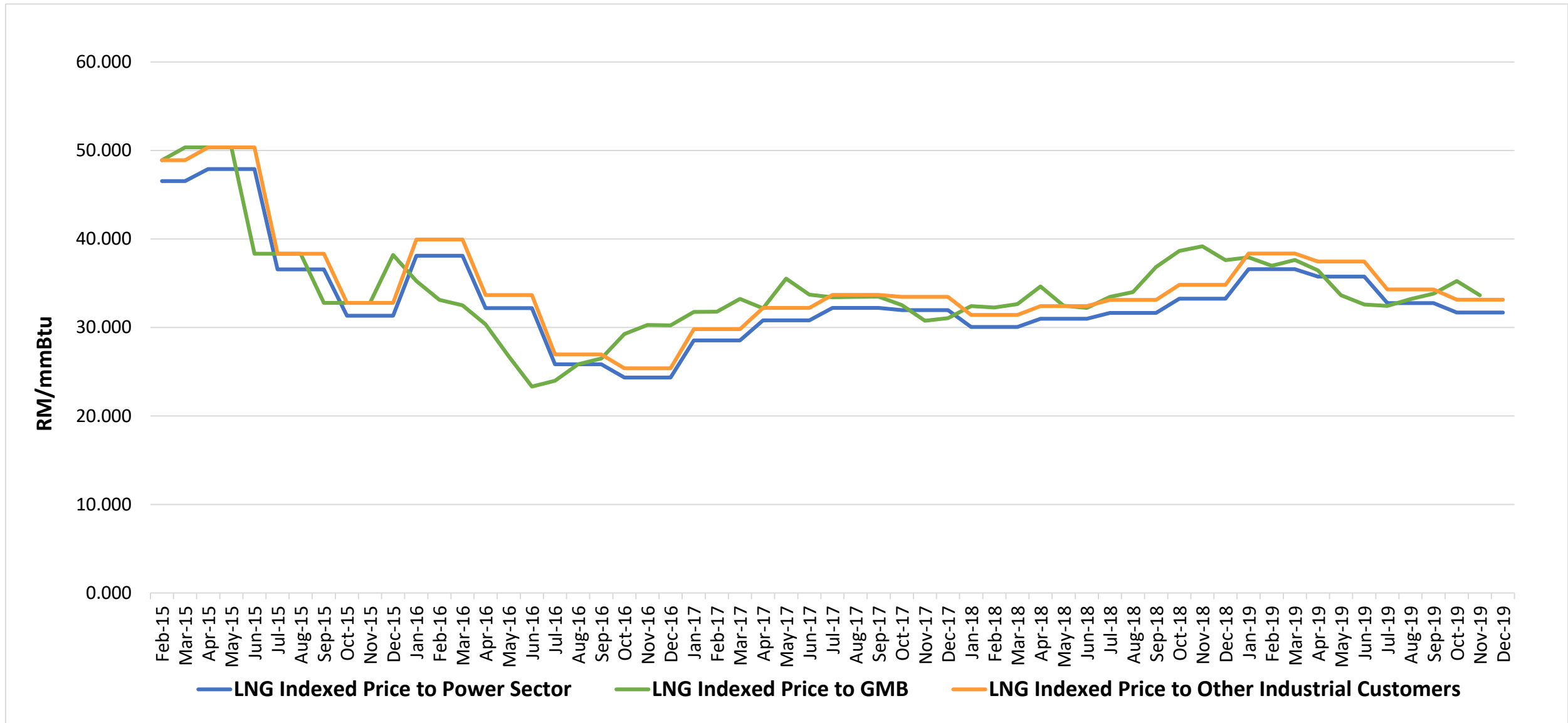


Unregulated piped gas prices (LNG indexed)



Source: Department of Statistics, Malaysia & Bank Negara Malaysia

Month	LNG Indexed Price (RM/mmBtu)			Month	LNG Indexed Price (RM/mmBtu)		
	Power Sector	GMB	Other Industrial Customers		Power Sector	GMB	Other Industrial Customers
Jan-14	46.019	48.346	48.346	Jan-17	28.534	30.229	29.812
Feb-14	46.019	48.346	48.346	Feb-17	28.534	31.756	29.812
Mar-14	46.019	48.346	48.346	Mar-17	28.534	31.781	29.812
Apr-14	47.649	50.073	50.073	Apr-17	30.810	33.219	32.211
May-14	47.649	50.073	50.073	May-17	30.810	32.151	32.211
Jun-14	47.580	50.073	50.073	Jun-17	30.810	35.514	32.211
Jul-14	48.567	51.056	51.056	Jul-17	32.196	33.707	33.681
Aug-14	48.567	51.056	51.056	Aug-17	32.196	33.401	33.681
Sep-14	48.567	51.056	51.056	Sep-17	32.196	33.447	33.681
Oct-14	45.837	48.171	48.171	Oct-17	31.968	33.486	33.445
Nov-14	45.537	48.171	48.171	Nov-17	31.968	32.520	33.445
Dec-14	45.837	48.171	48.171	Dec-17	31.968	30.753	33.445
Jan-15	46.537	48.906	48.906	Jan-18	30.045	31.055	31.412
Feb-15	46.537	48.906	48.906	Feb-18	30.045	32.410	31.412
Mar-15	46.537	48.906	48.906	Mar-18	30.045	32.253	31.412
Apr-15	47.900	50.340	50.340	Apr-18	30.980	32.648	32.412
May-15	47.900	50.340	50.340	May-18	30.980	34.635	32.412
Jun-15	47.900	50.340	50.340	Jun-18	30.980	32.455	32.412
Jul-15	36.570	38.336	38.336	Jul-18	31.630	32.214	33.103
Aug-15	36.570	38.336	38.336	Aug-18	31.630	33.461	33.103
Sep-15	36.570	38.336	38.336	Sep-18	31.630	33.990	33.103
Oct-15	31.320	32.763	32.763	Oct-18	33.252	36.825	34.815
Nov-15	31.317	32.763	32.763	Nov-18	33.252	38.640	34.815
Dec-15	31.317	32.763	32.763	Dec-18	33.252	39.171	34.815
Jan-16	38.106	38.200	39.932	Jan-19	36.589	37.612	38.349
Feb-16	38.106	35.252	39.932	Feb-19	36.589	37.925	38.349
Mar-16	38.106	33.119	39.932	Mar-19	36.589	36.973	38.349
Apr-16	32.184	32.496	33.663	Apr-19	35.734	37.618	37.445
May-16	32.184	30.345	33.663	May-19	35.734	36.447	37.445
Jun-16	32.184	26.708	33.663	Jun-19	35.734	33.635	37.445
Jul-16	25.837	23.313	26.955	Jul-19	32.754	32.602	34.290
Aug-16	25.837	23.982	26.955	Aug-19	32.754	32.442	34.290
Sep-16	25.837	25.834	26.955	Sep-19	32.754	33.199	34.290
Oct-16	24.342	26.494	25.370	Oct-19	31.674	33.816	33.145
Nov-16	24.342	29.269	25.370	Nov-19	31.674	35.238	33.145
Dec-16	24.342	30.275	25.370	Dec-19	31.674	33.631	33.145