

**GRID SYSTEM OPERATION SUMMARY (PENINSULAR MALAYSIA)**

	<b>FORECAST</b>	<b>ACTUAL</b>	<b>VARIANCE</b>	
<b>Maximum Demand for 12 January 2013</b>	13,105 MW	13,528 MW	3.23%	
<b>Energy Demand for 12 January 2013</b>	289.29 GWh	289.75 GWh	0.16%	
<b>Highest Maximum Demand (20 June 2012)</b>	15,685 MW	15,826 MW	0.90%	<b>*New MD</b>
<b>Highest Daily Energy Demand (20 June 2012)</b>	326.75 GWh	328.72 GWh	0.60%	<b>*New Energy</b>

Prepared by:

Electricity Market Operations

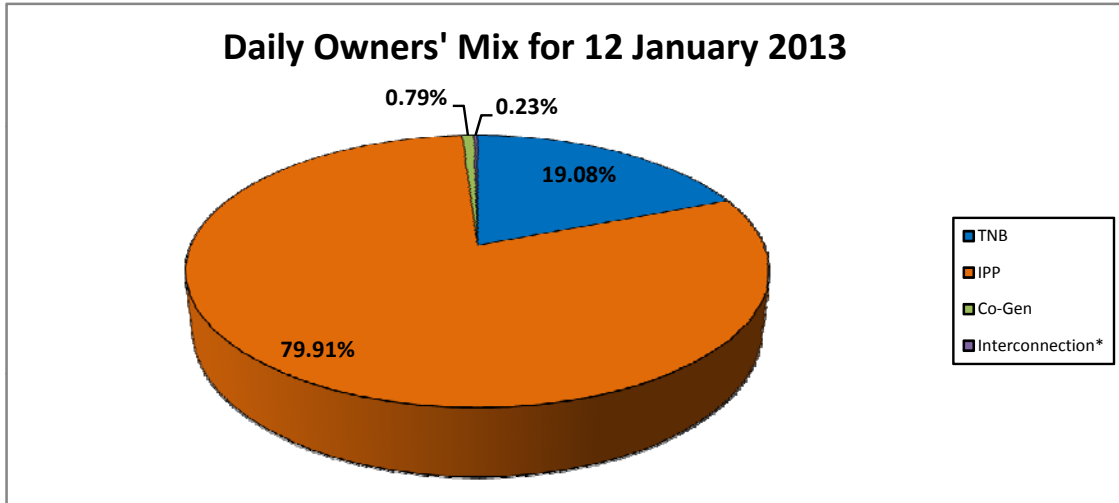
Electricity Supply & Market Regulations Dept.

Energy Commission Malaysia

13-Jan-13

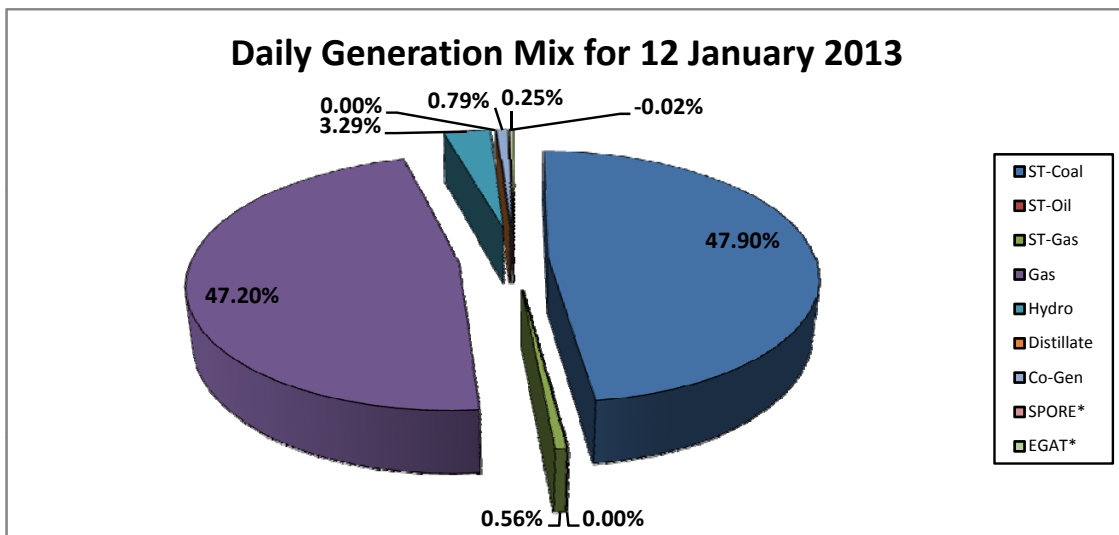
**Daily Owners' Mix for 12 January 2013**

<b>TNB</b>	55,538 MWh
<b>IPP</b>	232,575 MWh
<b>Co-Gen</b>	2,291 MWh
<b>Interconnection*</b>	659 MWh



**Daily Generation Mix for 12 January 2013**

<b>ST-Coal</b>	139,470 MWh
<b>ST-Oil</b>	- MWh
<b>ST-Gas</b>	1,635 MWh
<b>Gas</b>	137,441 MWh
<b>Hydro</b>	9,567 MWh
<b>Distillate</b>	- MWh
<b>Co-Gen</b>	2,291 MWh
<b>SPORE*</b>	(65) MWh
<b>EGAT*</b>	724 MWh



\*Negative = energy is imported from Singapore and Thailand  
 Positive = energy is exported to Singapore and Thailand