

GRID SYSTEM OPERATION SUMMARY (PENINSULAR MALAYSIA)

	FORECAST	ACTUAL	VARIANCE
Maximum Demand for 3 August 2013	13,358 MW	13,665 MW	2.30%
Energy Demand for 3 August 2013	298.53 GWh	300.43 GWh	0.64%
Highest Maximum Demand (13 May 2013)	16,298 MW	16,562 MW	1.62% *New MD
Highest Daily Energy Demand (25 June 2013)	345.88 GWh	345.25 GWh	-0.18% *New Energy

Prepared by:

Electricity Market Operations

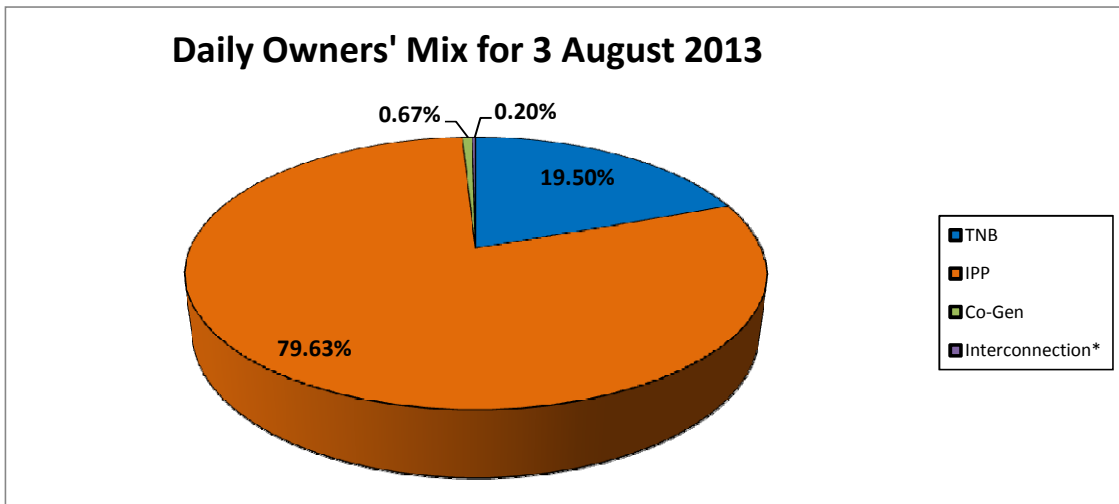
Electricity Supply & Market Regulations Dept.

Energy Commission Malaysia

04-Aug-13

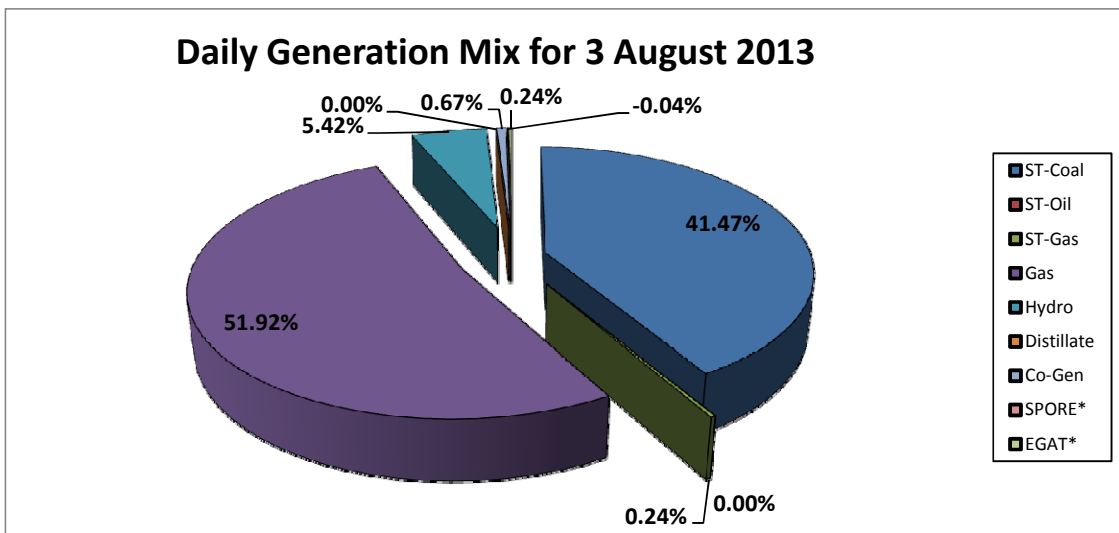
Daily Owners' Mix for 3 August 2013

TNB	58,826 MWh
IPP	240,189 MWh
Co-Gen	2,013 MWh
Interconnection*	597 MWh



Daily Generation Mix for 3 August 2013

ST-Coal	125,188 MWh
ST-Oil	- MWh
ST-Gas	734 MWh
Gas	156,734 MWh
Hydro	16,359 MWh
Distillate	- MWh
Co-Gen	2,013 MWh
SPORE*	(124) MWh
EGAT*	721 MWh



*Negative = energy is imported from Singapore and Thailand
 Positive = energy is exported to Singapore and Thailand