

## GRID SYSTEM OPERATION SUMMARY (PENINSULAR MALAYSIA)

	FORECAST	ACTUAL	VARIANCE
Maximum Demand for 25 August 2013	13,257 MW	13,099 MW	-1.19%
Energy Demand for 25 August 2013	280.21 GWh	281.06 GWh	0.30%
Highest Maximum Demand (13 May 2013)	16,298 MW	16,562 MW	1.62%
Highest Daily Energy Demand (25 June 2013)	345.88 GWh	345.25 GWh	-0.18%

\*New MD  
\*New Energy

Prepared by:

Electricity Market Operations

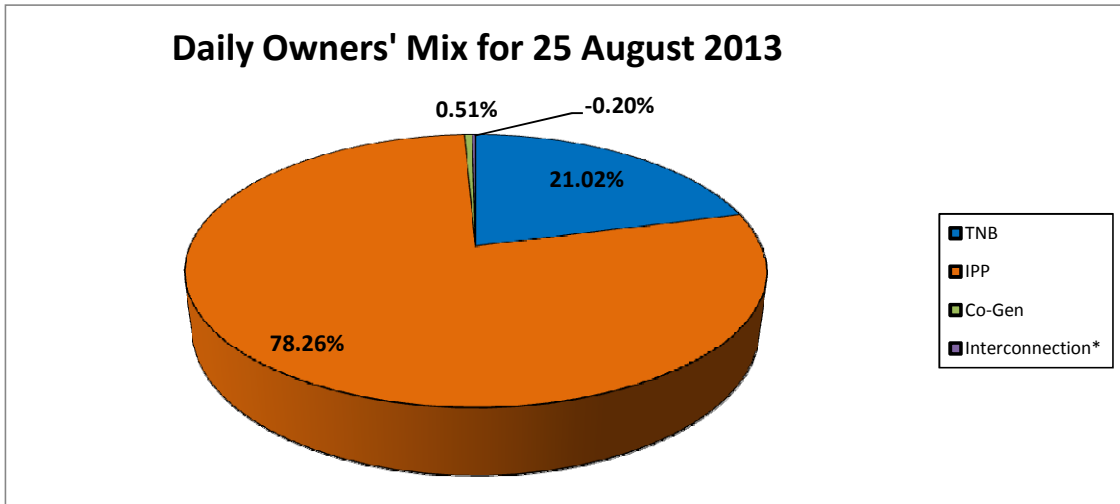
Electricity Supply & Market Regulations Dept.

Energy Commission Malaysia

26-Aug-13

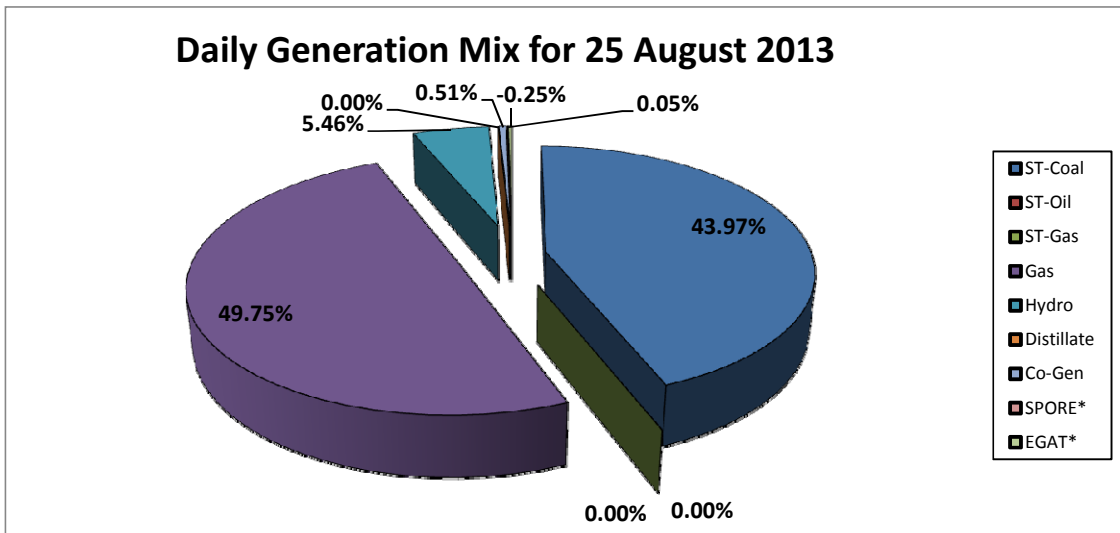
**Daily Owners' Mix for 25 August 2013**

TNB	59,091	MWh
IPP	219,953	MWh
Co-Gen	1,445	MWh
Interconnection*	(570)	MWh



**Daily Generation Mix for 25 August 2013**

ST-Coal	123,708	MWh
ST-Oil	-	MWh
ST-Gas	-	MWh
Gas	139,963	MWh
Hydro	15,373	MWh
Distillate	-	MWh
Co-Gen	1,445	MWh
SPORE*	130	MWh
EGAT*	(700)	MWh



\*Negative = energy is imported from Singapore and Thailand  
 Positive = energy is exported to Singapore and Thailand