

# GUIDELINES ON BATTERY ENERGY STORAGE SYSTEM (BESS) SAFETY





## **ELECTRICITY SUPPLY ACT 1990 [ACT 447]**

### **BATTERY ENERGY STORAGE SYSTEM (BESS) SAFETY GUIDELINES**

#### **GP/ST/No.62/2026**

IN exercise of the power conferred by section 50C of the Electricity Supply Act 1990 [Act 447], the Commission issues the following guidelines:

#### **Citation and commencement**

1. These guidelines may be cited as the Battery Energy Storage System (BESS) Safety Guidelines.
2. These Guidelines shall come into operation on the date of the registration of these Guidelines.

#### **Purpose**

3. The purpose of these Guidelines are to establish the requirements for the installation and maintenance of the Battery Energy Storage System.

Dated 15 May 2026

**SITI SAFINAH BINTI SALLEH**

Chief Executive Officer  
Energy Commission

## Table of Contents

1. OBJECTIVES.....	1
2. APPLICATION OF THE GUIDELINE .....	1
3. DEFINITION AND INTERPRETATION.....	2
4. REGULATORY REQUIREMENTS .....	4
5. APPROACH TO ADDRESS HAZARDS IN BESS.....	5
6. FUNDAMENTAL REQUIREMENTS.....	5
6.1 Technical Evaluation Requirement for BESS Component.....	5
6.2 Handling & Safe Working Condition .....	6
6.2.1 Transportation .....	6
6.2.2 Working Safety Clearance .....	6
6.3 Location of BESS.....	7
6.4 Protection System against Electrical Hazards.....	7
6.4.1 Typical Protection Scheme .....	7
6.4.2 Anti-Islanding .....	7
6.4.3 Disconnection Switch.....	8
6.4.4 Earthing .....	8
6.4.5 Ingress Protection (IP) .....	9
6.5 Protection System against Thermal Hazards .....	9
6.6 Testing and Commissioning .....	9
6.6.1 Factory Acceptance Test (FAT) .....	9
6.6.2 Site Acceptance Test (SAT).....	9
6.6.3 Completion and Test Certificate .....	10
6.7 Maintenance .....	10
6.8 Personal Protective Equipment (PPE) .....	11
6.9 Safety Signs and Notice.....	12
7. ADDITIONAL REQUIREMENT BASED ON BESS APPLICATION .....	12
8. RELEVANT STANDARDS .....	13
9. APPENDICES.....	14
APPENDIX A: Additional Requirements for Grid-Connected BESS – End User	14
APPENDIX B: Additional Requirements for Grid-Connected BESS – Utility Scale	16
APPENDIX C: Additional Requirements for Off-Grid BESS – Stand Alone .....	18
APPENDIX D: Recommendations Inspection & Maintenance Checklist.....	19

## **1. OBJECTIVES**

1.1 These guidelines are issued by the Commission for the following objectives:

- (a) to specify the electrical safety requirements of Battery Energy Storage System (BESS) in accordance with the requirements under the Electricity Supply Act 1990 [Act 447];
- (b) to outline the relevant standards of BESS application;
- (c) to set out the roles, functions and responsibilities of the relevant parties in relation to BESS's design, installation, operation and maintenance;
- (d) to provide for any other matters which may be or incidental to the requirement of BESS.

## **2. APPLICATION OF THE GUIDELINE**

2.1 These Guidelines shall apply to:

- (a) Lithium-ion batteries used in Battery Energy Storage Systems (BESS);
- (b) application of BESS as prescribed under Appendix; and
- (c) any person who use, work or operate BESS including but not limited to the licensee, electrical contractor, competent person, BESS service provider or consulting engineer.

### 3. DEFINITION AND INTERPRETATION

3.1 In these Guidelines, unless the context requires, the definition of the terms are as follows:

Terms	Definition
<b>Act</b>	means the Electricity Supply Act 1990 [Act 447];
<b>Anti-Islanding Protection</b>	means protection function or combination of protection functions preventing an unintentional island to be supplied with electrical energy by distributed energy resources;
<b>Battery Energy Storage System (BESS)</b>	means electrical energy storage system with accumulation subsystem based on batteries with secondary cells;
<b>battery system</b>	means system which comprises one or more cells, modules or battery packs and has a battery management system capable of controlling current in case of overcharge, overcurrent, overdischarge, and overheating;
<b>Battery Management System (BMS)</b>	means electronic system associated with a battery which has functions to control current in case of overcharge, overcurrent, overdischarge, and overheating and which monitors and/or manages the battery's state, calculates secondary data, reports that data and/or controls its environment to influence the battery's safety, performance and/or service life;
<b>Commission</b>	means the Energy Commission established under the Energy Commission Act 2001 [Act 610];
<b>Competent Person</b>	means a person who holds a certificate of competency issued by the Commission to perform work in accordance with the restrictions, if any, stated in the certificate;

<b>Distribution Code</b>	means the Distribution Code for Peninsular Malaysia, Sabah and Federal Territory of Labuan.
<b>Energy Management System (EMS)</b>	means system operating and controlling energy resources and loads of the installations;
<b>Grid Code</b>	means the Grid Code for Peninsular or Grid Code for Sabah/Labuan;
<b>IEC</b>	means International Electrotechnical Commission, organization that prepares and publishes International Standards for all electrical, electronic and related technologies;
<b>islanded mode</b>	means operating mode where BESS operates while disconnected from the utility network typically in microgrids, standby systems or those supplying critical loads during utility outages;
<b>local authority</b>	means any body that has legal powers and rights;
<b>Permit to Work (PTW)</b>	means written instruction specified in Regulations 113, Electricity Regulations 1994;
<b>Point of Connection (POC)</b>	means reference point on the Distribution or Transmission Network at which BESS is connected;
<b>Power Conversion System (PCS)</b>	means conversion system from alternating current to direct current or vice versa;
<b>Regulations</b>	means the Electricity Regulations 1994 [ <i>P.U.(A) 38/1994</i> ];

3.2 Subject to paragraph 3.1 and unless expressly indicated to the contrary or unless the context otherwise requires, the terms adopted and used in these Guidelines shall bear the same meaning as they are defined in the Act and the subsidiary legislations made under it.

## **4. REGULATORY REQUIREMENTS**

### **4.1 Design Approvals and Licenses**

- (a) The preparation and submission of plans, drawings, and specifications shall be carried out by competent persons as prescribed under Regulation 65.
- (b) Any person who use, work or operate BESS shall comply with the requirements provided under any guidelines or direction issued by the Commission and shall adhere to the minimum specified standards as outline in Appendix A.
- (c) Any person who carry out activity stipulated under subsection 9(1) of the Act in relation to BESS shall obtain a license in accordance with the requirements under the Act and any subsidiary legislations made under it.

### **4.2 Obligation of Electrical Contractor and Competent Person**

- (a) Any electrical work shall be performed or carried out by Electrical Contractor registered with the Commission.
- (b) A respective competent person shall be appointed for the design, installation, operation and maintenance of BESS in accordance with the requirements as the Act and Regulations or determined by the Commission.

### **4.3 Compliance with other written law**

- (a) Any person who use, work or operate BESS shall comply any regulatory requirements issued by the relevant local authority, including but not limited to, transportation, fire safety or BESS location, to ensure the safety of the installation.

## 5. APPROACH TO ADDRESS HAZARDS IN BESS

5.1 A comprehensive hazard mitigation strategy of BESS shall be provided in accordance with IEC 62933-5-1, including:

- (a) systematic hazard identification;
- (b) risk assessment;
- (c) application of appropriate risk reduction measures to ensure safe operation.

## 6. FUNDAMENTAL REQUIREMENTS

### 6.1 Technical Evaluation Requirement for BESS Component

6.1.1 BESS main component comprises, but is not limited to Battery Modules, Battery Management System (BMS) and Power Conversion System (PCS) as illustrated in Figure 1.

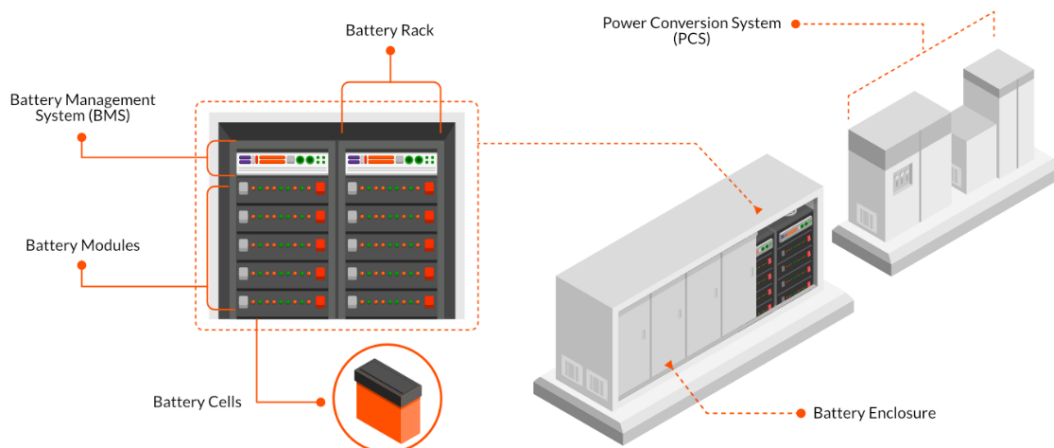


Figure 1: Example of Typical Design of BESS

6.1.2 Each BESS component must go through a technical evaluation to ensure it meets the required functional, safety, and performance standards, in line with relevant IEC standards and project specifications. Where applicable, test reports shall be provided to demonstrate compliance. The applicable standards include, but are not limited to, the following:

Table 1: Technical Evaluation Requirement for BESS Components

No.	Components/ System	IEC Standard for Testing
(a)	Battery Pack or Battery System	IEC 62619 IEC 63056
(b)	Battery Management System (BMS)	IEC 62619 IEC 63056 IEC 61508
(c)	Power Conversion System (PCS)	IEC 62477-1 IEC 62116
(d)	Energy Management System (EMS)	IEC 61508 IEC 61850

6.1.3 In addition to the components described above, all other electrical equipment shall comply with the relevant guidelines issued by the Commission or, where applicable, with the corresponding IEC standards.

## 6.2 Handling & Safe Working Condition

### 6.2.1 Transportation

- (a) Impact and vibration during transportation shall be considered for BESS that are designed to be transportable. Compliance ensures that the batteries are safe for air, sea, and land transport and helps prevent incidents during logistics operations.
- (b) BESS shall undergo testing in accordance with UN 38.3 prior to transport to verify resistance to the specified hazards. Test report shall be made available.

### 6.2.2 Working Safety Clearance

- (a) When evaluating working space for electrical installation and maintenance work, there shall be sufficient space to safely work

on the system without the risk of electrical hazards to personnel performing the installation or maintenance. The minimum safety clearance shall be complied to prevent access to dangerous or live parts operating above 30V AC or 60V DC.

- (b) BESS shall comply with the requirements set by the relevant local authority on safe electrical working space, or in the absence thereof, with applicable standards such as NFPA 70 which specify voltage-dependent criteria.

### **6.3 Location of BESS**

- (a) It is recommended that BESS be installed outdoors. However, if indoor installation is unavoidable, appropriate fire suppression systems shall be provided, and the installation shall comply with all applicable requirements of the Fire and Rescue Department.

### **6.4 Protection System against Electrical Hazards**

#### 6.4.1 Typical Protection Scheme

- (a) BESS shall be designed and installed to protect persons and equipment from electrical hazards including electric shock, short circuit, overcurrent, overvoltage and ground faults. The protection of BESS shall be in accordance with IEC 62933-5-2.
- (b) An updated typical protection scheme shall be illustrated in a single-line diagram, showing all key components, protective devices and disconnection points for BESS.
- (c) Specific protective measures, which vary by application, are detailed in the Appendix.

#### 6.4.2 Anti-Islanding

- (a) Grid connected BESS shall be equipped with anti-islanding protection that automatically disconnects from the utility grid (transmission and distribution networks) during a grid failure, to prevent back feeding into a deenergized grid.

- (b) This protection shall remain effective during maintenance or service activities to ensure the safety of worker and shall be designed in accordance with IEC 62933-5-1.
- (c) For BESS designed to operate in islanded mode (e.g. microgrid operation):
  - (i) The system shall be equipped with a transfer switch or circuit breaker capable of safely isolating the BESS from the utility grid while allowing continued supply to internal loads.
  - (ii) Clear and permanent signage shall be provided at the distribution board to identify circuits that remain energized during islanded mode operation.

#### 6.4.3 Disconnection Switch

- (a) BESS shall be designed for safe disconnection and shutdown during normal operation, maintenance, or when a fault occurs in accordance with IEC 62933-5-1.
- (b) The system must be able to disconnect either partly or fully when needed. During maintenance, it must be possible to isolate the system so that work can be done safely on the electrical and battery parts.
- (c) For systems with large amounts of stored energy, extra safety measures identified through a risk assessment must be applied. Any disconnection or shutdown must always be done in a way that keeps the system safe.

#### 6.4.4 Earthing

- (a) An earthing system is required to provide a low resistance path to the earth for the fault current.
- (b) All extraneous conductive parts of the installation shall be equipotential bonded and connected to the main earthing terminal.

#### 6.4.5 Ingress Protection (IP)

- (a) Enclosures, cabinets, and electrical equipment of BESS that located outdoor shall be provided with IP54 or higher. Higher IP ratings shall be specified if site conditions demand additional protection.
- (b) BESS shall be tested in accordance with IEC 60529 to verify its IP rating against moisture and pollution. Test report shall be made available.

### 6.5 Protection System against Thermal Hazards

- 6.5.1 BESS shall be provided with a heating, ventilation and air conditioning (HVAC) system or equivalent to maintain temperature sensitive parts within their limits.
- 6.5.2 Ventilation openings shall not be blocked by other components or parts.
- 6.5.3 BESS shall incorporate thermal runaway protection measures to prevent fire propagation and ensure human safety. Design and testing shall be in accordance with UL 9540A or subject to the requirements of relevant fire and safety authorities. Test report shall be made available.

### 6.6 Testing and Commissioning

#### 6.6.1 Factory Acceptance Test (FAT)

- (a) FAT shall be conducted to verify that BESS components meet design specifications and safety requirements before installation and shall comply with relevant standards. The FAT Certificate listing all tested components shall be provided.

#### 6.6.2 Site Acceptance Test (SAT)

- (a) Upon completion of the installation works of BESS, the Competent Person shall ensure that the installation be tested and commissioned in accordance with the Act and the Regulations.

- (b) The following tests shall include, but no limited to:
  - (i) Electrical safety tests including grounding, insulation, continuity, verification of protective devices, functional checks of disconnection/isolation switches and anti-islanding if connected to the grid.
- (c) SAT certificate detailing all tests performed shall be provided.

### 6.6.3 Completion and Test Certificate

- (a) The Supervision and Completion Certificate and the Test Certificate (Form G and Form H as prescribed in the First Schedule of the Regulations) for the installation shall be duly signed by the Competent Person undertaking the works in accordance with the Regulations. A copy of the certificates shall be kept by the owner for record and reference purposes.

## 6.7 Maintenance

- 6.7.1 Maintenance work shall only be carried out under a valid Permit to Work (PTW) as stipulated in Regulations 113.
- 6.7.2 PTW shall be issued prior to the commencement of work and shall clearly specify the scope of work, isolation measures, safety precautions, and validity period.
- 6.7.3 Any repair, replacement, servicing or cleaning of BESS or its component shall be carried out by competent persons or a person acting under his control.
- 6.7.4 Maintenance activities shall be planned and executed to ensure the safety of BESS. The following inspection and maintenance activities are recommended to maintain system integrity and performance. Where applicable, additional requirements or procedures specified by the manufacturer shall take precedence. Inspection for daily operational conditions:
  - (a) Inspection for daily operational conditions:

- (i) Check and verify that all alarm indicators and system status displays are normal; Check and verify that all alarm indicators and system status displays are normal;
  - (ii) Confirm that the communication and monitoring systems (BMS/EMS) are functioning correctly;
  - (iii) Inspect any abnormal behaviour such as unusual smell, temperature rise, water ingress or impeded airflow.
- (b) Periodic inspection:
- (i) Verify that all protection systems are operating properly and effectively;
  - (ii) Inspect electrical connections and earthing to ensure integrity and continuity.
- (c) Routine maintenance:
- (i) Maintain equipment cleanliness to ensure the BESS area is free from dust, debris, and obstructions;
  - (ii) Replace or service equipment and components as necessary to maintain performance and safety.
  - (iii) Update software or firmware (e.g. BMS/EMS) where required

6.7.5 All records of maintenance shall be kept, periodically updated and be accessible to relevant persons.

## **6.8 Personal Protective Equipment (PPE)**

6.8.1 Personnel involved in maintenance work or working on or near live parts of BESS shall wear appropriate PPE in accordance with site safety protocols and relevant standards to protect against electrical, thermal and chemical hazards.

## **6.9 Safety Signs and Notice**

6.9.1 On-site signage and labelling shall be provided to clearly identify that the electrical installation includes BESS.

6.9.2 Signs shall be displayed to indicate the following:

- (a) emergency exit;
- (b) manufacturer name;
- (c) phone number for emergency;
- (d) prohibition of access to unauthorized persons;
- (e) mandatory use of PPE;
- (f) AC voltage [VAC] warning;
- (g) DC voltage [VDC] warning;
- (h) first aid measures;
- (i) arc flash and shock hazard – appropriate PPE required;
- (j) battery types;
- (k) gas hazard.

## **7. ADDITIONAL REQUIREMENT BASED ON BESS APPLICATION**

7.1 Additional safety requirements for BESS based on application are detailed in the Appendix.

**8. RELEVANT STANDARDS**

<b>NO.</b>	<b>INTERNATIONAL STANDARDS</b>	<b>DESCRIPTIONS</b>
1.	IEC 62933-5-1	Electrical energy storage (EES) systems - Part 5-1: Safety considerations for grid-integrated EES systems - General specification
2.	IEC 62933-5-2	Electrical energy storage (EES) systems - Part 5-2: Safety requirements for grid-integrated EES systems - Electrochemical-based systems
3.	IEC 62619	Secondary cells and batteries containing alkaline or other non-acid electrolytes - Safety requirements for secondary lithium cells and batteries, for use in industrial applications
4.	IEC 63056	Secondary cells and batteries containing alkaline or other non-acid electrolytes - Safety requirements for secondary lithium cells and batteries for use in electrical energy storage systems
5.	IEC 62477-1	Safety requirements for power electronic converter systems and equipment - Part 1: General
6.	IEC 61508	Functional safety of electrical/electronic/programmable electronic safety-related systems - Part 1: General requirements
7.	IEC 62116	Utility-interconnected photovoltaic inverters - Test procedure of islanding prevention measures
8.	IEC 61850	Communication networks and systems for power utility automation
9.	UN 38.3	Transportation Testing for Lithium Batteries and Cells
10.	NFPA 70	United States National Electrical Code (NEC): Safe electrical design, installation, and inspection to protect people and property from electrical hazards
11.	IEC 60529	Degrees of protection provided by enclosures (IP Code)
12.	UL 9540A	Test Method for Evaluating Thermal Runaway Fire Propagation in Battery Energy Storage Systems

## 9. APPENDICES

### APPENDIX A: Additional Requirements for Grid-Connected BESS – End User

Requirements	End User BESS
<b>Scope</b>	BESS owned and operated by the consumer in parallel with the grid and producing energy for self-consumption or for grid export (e.g.: residential/ commercial/ industrial).
<b>DC Side Protection</b>	Protective device against overcurrent, overvoltage, surge and short-circuit faults as follows, but not limited to: <ul style="list-style-type: none"> <li>i. DC fuses</li> <li>ii. DC circuit breakers</li> <li>iii. Surge Protection Devices (SPDs)</li> <li>iv. Battery Management System (BMS)</li> <li>v. Reverse Polarity Protection</li> </ul>
<b>AC Side Protection</b>	Protective device against overcurrent, overvoltage/ undervoltage, overfrequency/ underfrequency, surge, earth faults and short-circuit faults as follows, but not limited to: <ul style="list-style-type: none"> <li>i. AC Fuses</li> <li>ii. AC Circuit Breakers</li> <li>iii. Residual Current Device (RCD)</li> <li>iv. Protection Relays (e.g., Directional Overcurrent, Differential, etc.)</li> <li>v. AC Surge Protection Devices (SPDs)</li> <li>vi. Export Limiting / Zero Export Control</li> <li>vii. Synchronization &amp; Phase Protection</li> </ul>
<b>Anti-Islanding Protection</b>	Required. Upon detection and operation of Anti Islanding Protection, the inverters shall cease operation within the time specified by Distribution/Grid Code. For BESS intended to operate in islanded mode, the conditions in clauses 6.4.2 (c) shall be satisfied.
<b>Protection at POC</b>	According to Distribution Code (connected to Distribution Network) or Grid Code (connected to Transmission Network).
<b>Lightning Protection System</b>	According to MS IEC 62305.

<b>SAT</b>	SAT shall be carried out to verify compliance with the applicable technical requirements of the Distribution Code or Grid Code. The SAT results shall be documented.
------------	--

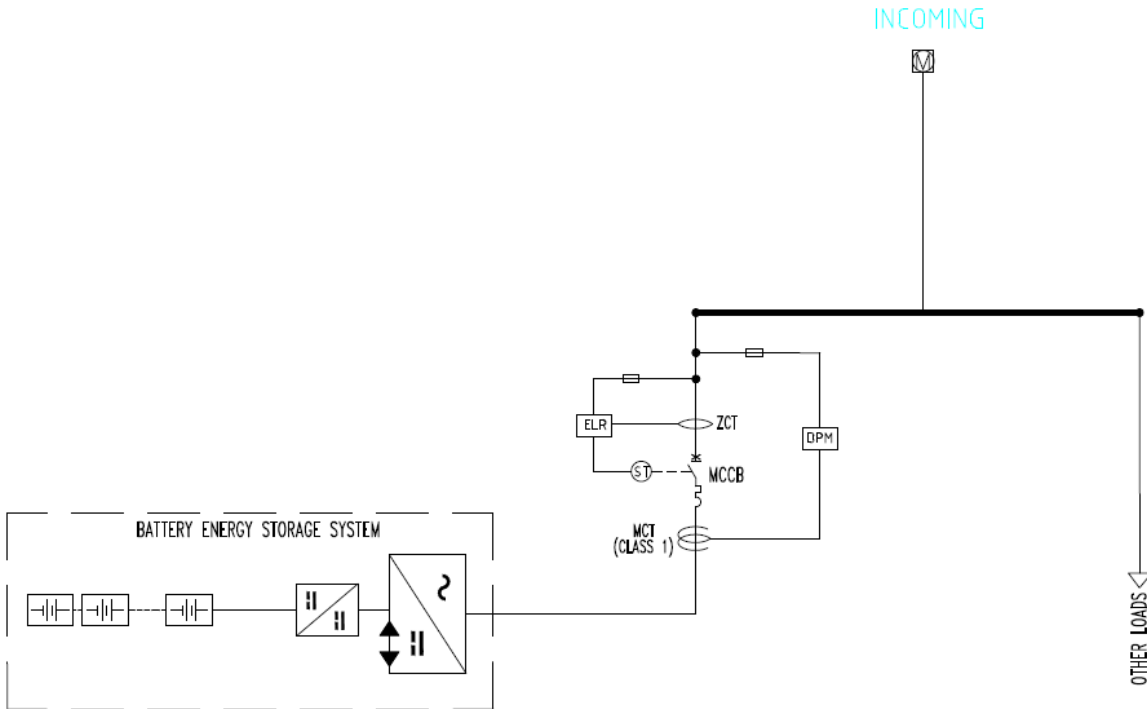


Figure 2: Example of SLD for Grid Connected BESS

## APPENDIX B: Additional Requirements for Grid-Connected BESS – Utility Scale

Requirements	Utility Scale
<b>Scope</b>	Large-capacity BESS connected to the main electricity grid, supplying energy directly to the transmission or distribution grid to support grid operations and stability.
<b>DC Side Protection</b>	Protective device against overcurrent, overvoltage, surge and short-circuit faults as follows, but not limited to: <ol style="list-style-type: none"> <li>i. DC fuses</li> <li>ii. DC circuit breakers</li> <li>iii. Surge Protection Devices (SPDs)</li> <li>iv. Battery Management System (BMS)</li> <li>v. Reverse Polarity Protection</li> </ol>
<b>AC Side Protection</b>	Protective device against overcurrent, overvoltage/ undervoltage, overfrequency/ underfrequency, surge, earth faults and short-circuit faults as follows, but not limited to: <ol style="list-style-type: none"> <li>i. AC Fuses</li> <li>ii. AC Circuit Breakers</li> <li>iii. Protection Relays (e.g., Directional Overcurrent, Differential, etc.)</li> <li>iv. AC Surge Protection Devices (SPDs)</li> <li>v. Export Limiting / Zero Export Control</li> <li>vi. Synchronization &amp; Phase Protection</li> </ol>
<b>Anti-Islanding Protection</b>	Required. The protections shall only operate for faults beyond fault ride through capability described in Grid Code. Upon detection and operation of Anti Islanding Protection, the inverters shall cease operation.
<b>Protection at POC</b>	According to Grid Code.
<b>Lightning Protection System</b>	According to MS IEC 62305.
<b>SAT</b>	SAT shall be carried out to verify compliance with the applicable technical requirements of the Grid Code. The SAT results shall be documented.

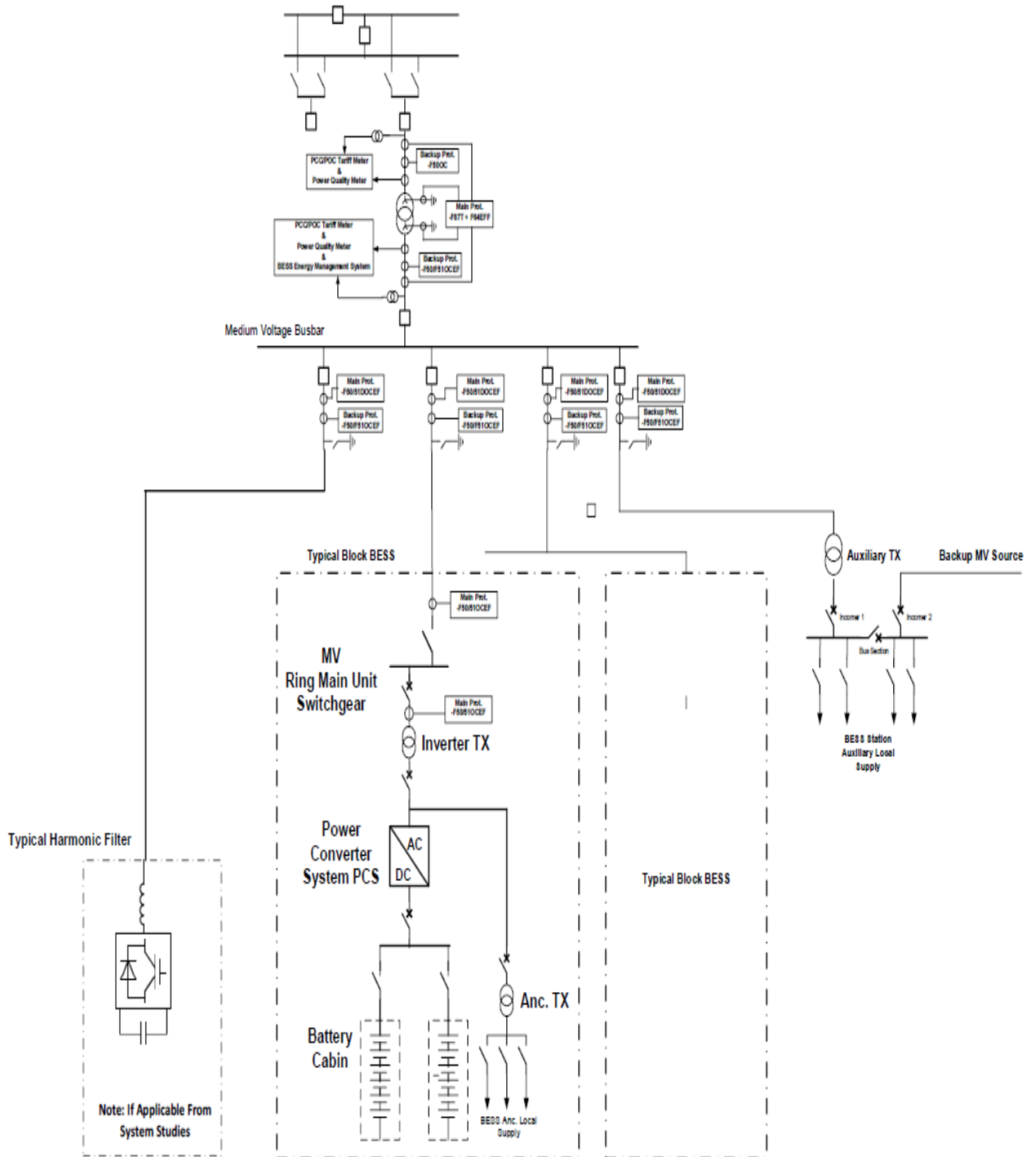


Figure 3: Example of SLD for Utility Scale BESS

**APPENDIX C: Additional Requirements for Off-Grid BESS – Stand Alone**

<b>Requirements</b>	<b>Off-Grid – Stand Alone</b>
<b>Scope</b>	BESS operate independently from the utility grid, providing energy in remote or isolated locations.
<b>DC Side Protection</b>	Protective device against overcurrent, overvoltage, surge and short-circuit faults as follows, but not limited to: <ul style="list-style-type: none"> <li>i. DC fuses</li> <li>ii. DC circuit breakers</li> <li>iii. Surge Protection Devices (SPDs)</li> <li>iv. Battery Management System (BMS)</li> </ul>
<b>AC Side Protection</b>	Protective device against overcurrent, overvoltage/ undervoltage, overfrequency/ underfrequency, surge, earth faults and short-circuit faults as follows, but not limited to: <ul style="list-style-type: none"> <li>i. AC Fuses</li> <li>ii. AC Circuit Breakers</li> <li>iii. Residual Current Device (RCD)</li> <li>iv. Protection Relays (e.g., Directional Overcurrent, Differential, etc.)</li> <li>v. AC Surge Protection Devices (SPDs)</li> <li>vi. Export Limiting / Zero Export Control</li> </ul>
<b>Anti-Islanding Protection</b>	Not required.
<b>Protection at POC</b>	Not required.
<b>Lightning Protection System</b>	Accordance to MS IEC 62305
<b>SAT</b>	SAT shall be carried out to verify compliance with the applicable technical requirements. The SAT results shall be documented.

## APPENDIX D: Recommendations Inspection & Maintenance Checklist



### INSPECTION & MAINTENANCE CHECKLIST BATTERY ENERGY STORAGE SYSTEM (BESS)

DETAILS OF LOCATION				
Name				
Address				
BESS Category				
No.	Item/Component	Inspection / Verification	Status (Yes / No / N.A.)	Remarks
<b>A. Daily Operational Inspection</b>				
1.	System alarms & indicators	Verify all alarms and displays are normal		
2.	Communication systems (BMS/EMS)	Confirm systems are operational		
3.	Battery modules	Check for abnormal behavior (smell, swelling, temperature rise)		
4.	Battery area	Inspect for electrolyte leakage or water ingress		
5.	Ventilation fans	Ensure airflow is not impeded		
<b>B. Periodic Inspection</b>				
1.	Protection systems	Verify proper operation of all protection functions		
2.	Electrical connections	Inspect for integrity and continuity		
3.	Earthing system	Check earthing cables and terminals for discoloration, wear, hot spots, or loose connections; verify continuity		
4.	Battery modules	Inspect for electrolyte leakage, damaged cables, or abnormal cell behavior		
5.	Battery Management System (BMS)	Check for error messages or abnormal readings		
6.	Ventilation system	Confirm unobstructed airflow and clean filters		
7.	Cooling System	Verify coolant/refrigerant level is sufficient; check for damaged or worn hoses		
8.	Power Conversion System (PCS)	Inspect terminals for burn marks, hot spots, or loose connections; check for water ingress		
9.	PCS parameters	Verify AC voltage, frequency, and temperature within allowable range		
10.	Cabling	Check cables for discoloration, wear, and secure connections		
<b>C. Routine Maintenance</b>				
1.	BESS area	Clean and remove dust, debris, and obstructions		
2.	Cables, hoses, fans	Replace or repair worn-out or damaged components		
3.	BMS/EMS software	Update firmware/software if required		
4.	Documentation	Record maintenance findings and corrective actions		
Remarks: _____				
<hr style="border-top: 1px dashed black;"/>				
Endorsement by Appointed Competent Person:			Endorsement by Licensee Representative:	
Signature :			Signature :	
Name :			Name :	
Designation :			Designation :	
Date:			Date :	
Competency Stamp :			Company Stamp :	



**SURUHANJAYA TENAGA (ENERGY COMMISSION)**

NO. 12, JALAN TUN HUSSEIN, PRECINCT 2,  
62100 PUTRAJAYA



(603) 8870 8500



[www.st.gov.my](http://www.st.gov.my)